



FISCHER **ULTIMATE™** SERIES

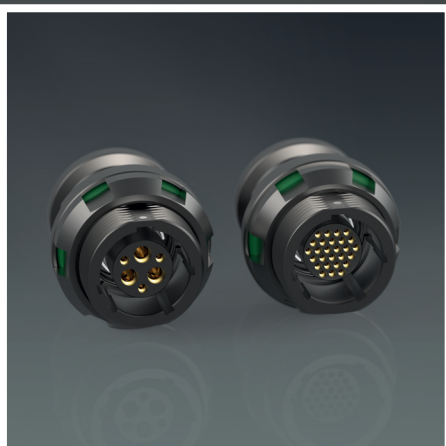
2 TO **42**
CONTACTS

RUGGED COMPACT LIGHTWEIGHT

- IP68 up to 120 m / IP69 / Hermetic
- 360° EMC shielding
- High corrosion resistance
- 10,000 mating cycles



HDMI™



REIMAGINING CONNECTIVITY
TOGETHER

fischer®
C O N N E C T O R S



07 (2 – 10 contacts)



08 (2 – 9 contacts)



11 (8 – 19 contacts)



13 (5 – 27 contacts)



15 (2 – 27 contacts)



18 (42 contacts)



*Actual size 1:1 when printed at full size on A4 paper.

RESIN-SEALED CONTACT BLOCK

- Enhanced sealing (IP68/69 even unmated, gastight, CBRN decontamination)
- Greater shock and vibration resistance
- Superior cable resistance (traction)

PLUGS**

CABLE MOUNTED

BODY STYLES

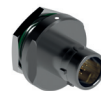
Locking system	UP01-L	UP01-Q
Sealing	Push-pull	Quick-release
Design	IP68/IP69	IP68/IP69
	Short/Overmolding	Short/Overmolding



PANEL FRONT MOUNTED

BODY STYLES

Locking system	UP50
Sealing	Non-locking
Design	IP68/IP69
	Front-projecting



RECEPTACLES**

CABLE MOUNTED

BODY STYLES

Sealing	UR50
Design	IP68 /IP69
	Standard



PANEL FRONT MOUNTED

BODY STYLES

Sealing	UR03
Design	IP68/IP69 Hermetic
	Front-projecting



PANEL REAR MOUNTED

BODY STYLES

Sealing	UR01	UR02
Design	IP68/IP69 Hermetic	IP68/IP69 Hermetic
	Front-projecting	Rear-projecting



** Available in brass and aluminum.
Available in anthracite and chrome grey finish.

BEND RELIEF & CABLE ASSEMBLY

- Bend relief for easy self-assembly, no tool required
- Cable assembly with straight or angled overmolding
- 120 m submersible solution available on request



For more information visit
fischerconnectors.com/ultimate